

 广东中亚铝业有限公司  
GUANGDONG ZHONGYA ALUMINUM CO.,LTD



Tel: 0758-3626888 | Fax: 0758-3626810

肇庆高新技术产业开发区亚铝大街东3号 邮编: 526238  
No. 3, East Yalu Street, Zhaoqing High-tech Industrial Development Zone, Dawang district, Guangdong China. Postal code: 526238

 广东中亚铝业有限公司  
GUANGDONG ZHONGYA ALUMINUM CO.,LTD

工业铝型材

INDUSTRIAL  
ALUMINIUM  
PROFILES



精益求精 · 铸造品质 THE PURSUIT OF EXCELLENCE

# T N Z T N Z O C

- 01 企业介绍  
COMPANY PROFILE
- 03 发展历程  
DEVELOPMENT HISTORY
- 05 荣誉证书  
HONORARY CERTIFICATES

- 07 合作品牌  
PARTNER BRANDS
- 08 检测中心  
TEST CENTER
- 09 生产车间  
PRODUCTION WORKSHOP
- 15 产品概览  
PRODUCT OVERVIEW

# ZHONG YA



# 企业介绍

## COMPANY PROFILE

广东中亚铝业有限公司始创于1993年，诞生于中国铝型材之都——“佛山南海”，后迁址肇庆大旺，是国内最早一批成长起来的民营铝加工企业之一，如今已成为拥有近1000亩生产基地、年产销量达22万吨的大型综合性铝型材制造商。

公司具备熔铸、挤压、表面处理、深加工等铝型材研发、生产、加工、服务全链条生产能力，拥有600T-5500T各型号挤压生产线42条，20000套/年的模具设计制造能力，以及喷涂、氧化、电泳等铝材市场主流表面处理工艺，设备配置、品质管控均达到国际先进水平。

在“碳中和”与“高质量”发展目标下，近年来中亚铝业积极践行“绿色智造”，以技术创新持续筑牢自身在国内外中高端铝材市场的品牌地位。

Guangdong Zhongya Aluminum Co., Ltd. was founded in 1993, started in the aluminum profile capital of China — 'Foshan Nanhai.' It later relocates to Zhaoqing Dawang and is one of the earliest private aluminum processing enterprises to grow in China. After thirty years of arduous pioneering and steadfast progress, Zhongya Aluminum has now grown into a large-scale comprehensive aluminum profile manufacturer, owning nearly 1000 mu of production base and an annual production and sales volume of 220,000 tons.

The company possesses a complete production chain capacity for aluminum profile R&D, production processing and service, including die casting, die workshop, extrusion, surface treatment, and fabrication. It has 42 extrusion production lines ranging from 600T to 5500T, die design and manufacturing capacity of 20,000 sets/year, and mainstream surface treatment technologies for aluminum materials such as powder-coating, anodizing, electrophoresis. Both equipment configuration and quality control have reached an internationally advanced level.

Aligning closely with the national 'carbon neutrality' goal and the industry's 'high-quality' development requirements, in recent years, Zhongya Aluminum has actively implemented the 'green intelligent manufacturing' corporate development strategy. With technological innovation and low-carbon energy-saving measures, it continues to solidify its brand position in the domestic and international mid-to-high-end aluminum material market.

1000 亩

生产基地 PRODUCTION BASE

42 条

挤压生产线 EXTRUSION LINES

220000 吨

年产销量 ANNUAL PRODUCTION AND SALES VOLUME

20000 套

每年的模具设计制造 ANNUAL DIE DESIGN AND MANUFACTURING



# 发展历程

## DEVELOPMENT HISTORY

# 1993

### 开创中亚 PIONEERING ZHONGYA

1991年始建中兴铝材厂并开展贸易，1993年6月搬迁钟边并正式成立中亚品牌，建厂初期仅有三台机，厂房占地面积约100亩，员工人数约100人。

In 1991, we started to build Zhongxing Aluminum Factory and carry out trade, and in June 1993, we moved to Zhongbian district and formally established the brand of Zhongya Aluminum. At Zhongya's early stage, there were only three machines, and the factory covered an area of about 100 acres, with the number of employees of about 100 people.



# 2012

### 高速发展 RAPID DEVELOPMENT

乘着时代的浪潮，中亚强势进军地产，做优质铝材供应商，助力打造多个房地产经典项目，如：深圳会展中心、奥林匹克体育馆、深圳华侨城创想大厦、科威特国际机场、澳大利亚CLEMTON，并先后荣获中国驰名商标、中国铝材十大品牌证书等称号。

Riding on the trend waves, Zhongya Aluminum entered the real estate industry. Zhongya aimed to be high-quality aluminum suppliers and to create a number of real estate classic projects, including Shenzhen Convention and Exhibition Center, Olympic Stadium, Shenzhen Overseas Chinese Town Creative Building, Kuwait International Airport, Clemton, Australia. Zhongya Aluminum has been awarded as China's Well-known Trademarks, China's Top Ten Aluminum Brands Certificate, etc.



# 2019

### 创新突破 INNOVATIVE BREAKTHROUGHS

中亚于2019年，在国际上应对澳洲反倾销、反补贴调查中取得完胜，在国内被香港品质保证局评为“AAAAA级 标准化良好行为企业”、荣获中国民营建筑企业100强。

In year 2019, a complete victory of Australia's anti-dumping and countervailing investigations lead Zhongya in an advanced export status. Hong Kong Quality Assurance Agency also rated Zhongya as "AAAAA grade standardization of good conduct enterprises", and the China's top 100 private construction enterprises.



# 2023

### 多元化发展 DIVERSIFICATION

2023年新周期，中亚紧跟时代趋势，聚焦高端铝型材产业发展，更加积极地推动产品迭代、技术革新、业务拓展等，以寻求更深层次的突破。在产品层面，中亚坚持建材、工业材全方位多元化发展战略，聚焦汽车轻量化、消费电子、新能源等应用领域，推动研发一系列高附加值产品。在市场层面，中亚以澳洲为重要支点，产品远销五大洲，覆盖全球所有发达国家及主要新兴经济体，持续筑牢品牌出海根基。从无到有、从有到优，从区域到全球，中亚始终坚守品质初心，以品质铸就品牌，坚定地推动中亚品牌走向世界。

With the new cycle of 2023, Zhongya Aluminum continues on the development of high-end aluminum profile industry. In order to seek deeper breakthroughs, Zhongya eagerly promotes product reiteration, technological innovation, business expansion, and service enhancement. As in product level, Zhongya Aluminum adheres the all-round diversified development strategy of building materials and industrial materials; focuses on automotive lightweight; high-tech electronics; new energy reserves and other applications. It has won the certificate of IATF16949 quality management system certification for the automotive industry. The journey never stops. Zhongya Aluminum will strive to expand worldwide with high determination.



# 2007

### 迁址肇庆 RELOCATION TO ZHAOQING

中亚历时两年，在肇庆大旺高新技术产业开发，开发了占地面积约1000亩的多功能大型厂房，聘请员工超2000名。2007年12月，中亚正式迁址，成为率先进驻该区域的两家企业之一。大旺高新区现已形成经济活跃、产业集聚的工业区域。

Zhongya Aluminum took two years to construct a large multi-functional factory. Covering an area of about 1,000 acres and employing more than 2,000 staffs in the High-Tech Industrial Development Zone in Dawang, Zhaoqing, Zhongya Aluminum formally relocated to the site in December 2007, in which becoming one of the first two companies moving into the area. Dawang Hi-Tech Zone is now an economically active industrial area with a concentration of industries.



# 2009

### 内销增长 DOMESTIC SALES GROWTH

中亚内销从2009年开始，随着公司对国内市场的开拓，其占比一直呈现持续增长的态势，从最初的20%，到高达85%。同年，中亚大规模发展光伏太阳能板块业务，正式进入工业型材赛道。

Since 2009, Zhongya Aluminum's domestic sales has been substantially growing from the initial 20%, to as high as 85% of the total sales. Its large-scale development of photovoltaic solar panel business had officially entered the industrial profile track.



# 未来可期

The best is yet to come



# 荣誉证书 HONORARY CERTIFICATES



16949汽车行业质量管理体系  
认证证书



质量管理体系认证证书(中文版)



CAQI全国产品和服务质量诚信  
示范企业



SIRIM认证



ISO认证



中国铝材十大品牌



中国驰名商标“亚亚”



工业型材 十强企业



建筑型材 十强企业



家装铝材 十强企业



DNV认证



SGS认证



AAAAA级标准化良好行为企业



职业健康安全管理体系认证证书



中国绿色建材产品认证



推荐产品证书



品牌强国



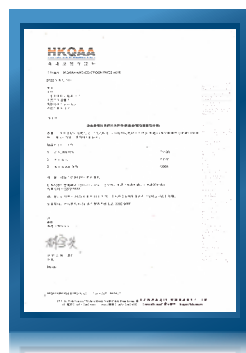
中国铝型材行业10强企业



全国质量诚信标杆企业



TUV认证



标准化良好行为评价标志  
(AAAAA级)



广东省著名商标证书



广东省名牌产品(建材)证书



中国建材企业500强证书



中国民营建材企业100强证书



中国优选品牌



## 合作品牌 PARTNER BRANDS



## 检测中心 TEST CENTER

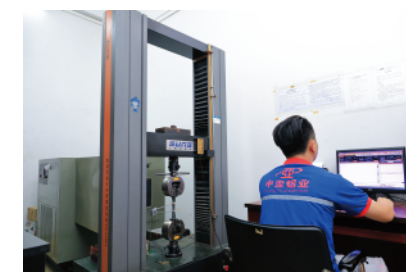


铸造专业品质的中亚产品始于研发，中亚拥有先进的检测设备和分析仪器，可进行多项国内外标准及各项涉及力学性能、化学成分、金相分析、耐候性/光泽度测试、涂层/漆膜性能、精密测量等多个项目的检测。

高品质严要求方能树品牌。企业的内控标准控制在严于国家标准要求的水平，中亚人用认真的态度、严格的流程为产品严把质量关。

Zhongya Aluminum's products with professional quality in casting began with research and development. Zhongya Aluminum has advanced testing equipment and analytical instruments, which can perform tests on multiple domestic and foreign standards, as well as various projects related to mechanical properties, chemical composition, metallographic analysis, weather resistance/glossiness testing, coating/paint film performance, precision measurement, etc.

Only with high quality and strict requirements can the brand be established. The internal control standards of enterprises are controlled at a level that is stricter than the national standard requirements. Staffs of Zhongya Aluminum use the serious attitude and strict processes to put the quality of products under control.





## 熔铸车间 CASTING WORKSHOP

**25**万吨  
年产量20-25万吨  
Annual production of 200,000-250,000 tonnes

年产量20-25万吨，拥有12条自动化高水平、工艺稳定、生产效率高的熔炉，主要生产建筑、汽车和工业产品所需的铝合金铸棒。

With an annual output of 200,000 to 250,000 tons and 12 automated, stable processes, and high efficiency furnaces, it mainly produces aluminum alloy cast rods required for construction, automotive, and industrial products.

**12**条  
12条自动化的熔炉  
12 automated furnaces



## 模具车间 DIE STORAGE WORKSHOP

模具中心面积 Mould centre area

**20000**m<sup>2</sup>

模具中心面积达20000平方米，拥有先进的模具加工设备，以及一大批高技术人才，能够系统进行模具开发设计和制造，满足全球运输、工业、建筑及消费品等行业对铝制品的高精要求。

The die storage center covers an area of 20,000 square meters and possesses advanced die processing equipment, as well as a large number of high-tech talents. It can systematically carry out die development, design, and manufacturing to meet the precise requirements of aluminum products in industries such as global transportation, construction, and consumer goods.





## 挤压车间 EXTRUSION WORKSHOP



42条挤压生产线，最高吨位为5500T，年产量可达22万吨，多台挤压机配备在线淬火线、优质冷床、单人矫直机、长铸锭加热炉、双头、三头牵引机、剥皮机等设备，以及16台时效炉。

There are 42 extrusion production lines with a maximum tonnage of 5,500T and an annual output of 220,000 tons. Multiple extrusion machines are equipped with online quenching lines, high-quality cooling beds, straightening machines, long ingot heating furnaces, double-head and triple head traction machines, peeling machines and 16 sets of aging furnaces.



## 深加工车间 FABRICATION WORKSHOP



拥有电脑数控机床、德国生产的双头切割机及钻床、铆焊机具有世界先进技术水平等多种设备，可加工各类高档工业、装饰、家具用型材，及根据客户要求提供优质的深加工服务。

Equipped with computer numerical control (CNC) machines, double-headed cutting machines and drilling machines from Germany, riveting and welding machines, and other various equipments with world-advanced technological levels, it can process all kinds of high-graded industrial, decorative, and furniture profiles, and provide high-quality fabricating services according to customer requirements.





## 喷涂车间 POWDER COATING WORKSHOP

先后从澳大利亚引进彩色粉末喷涂卧式生产线6条、粉末喷涂立式生产线4条、氟碳喷涂生产线1条、木纹喷涂生产线1条，可喷涂长度达12米长。

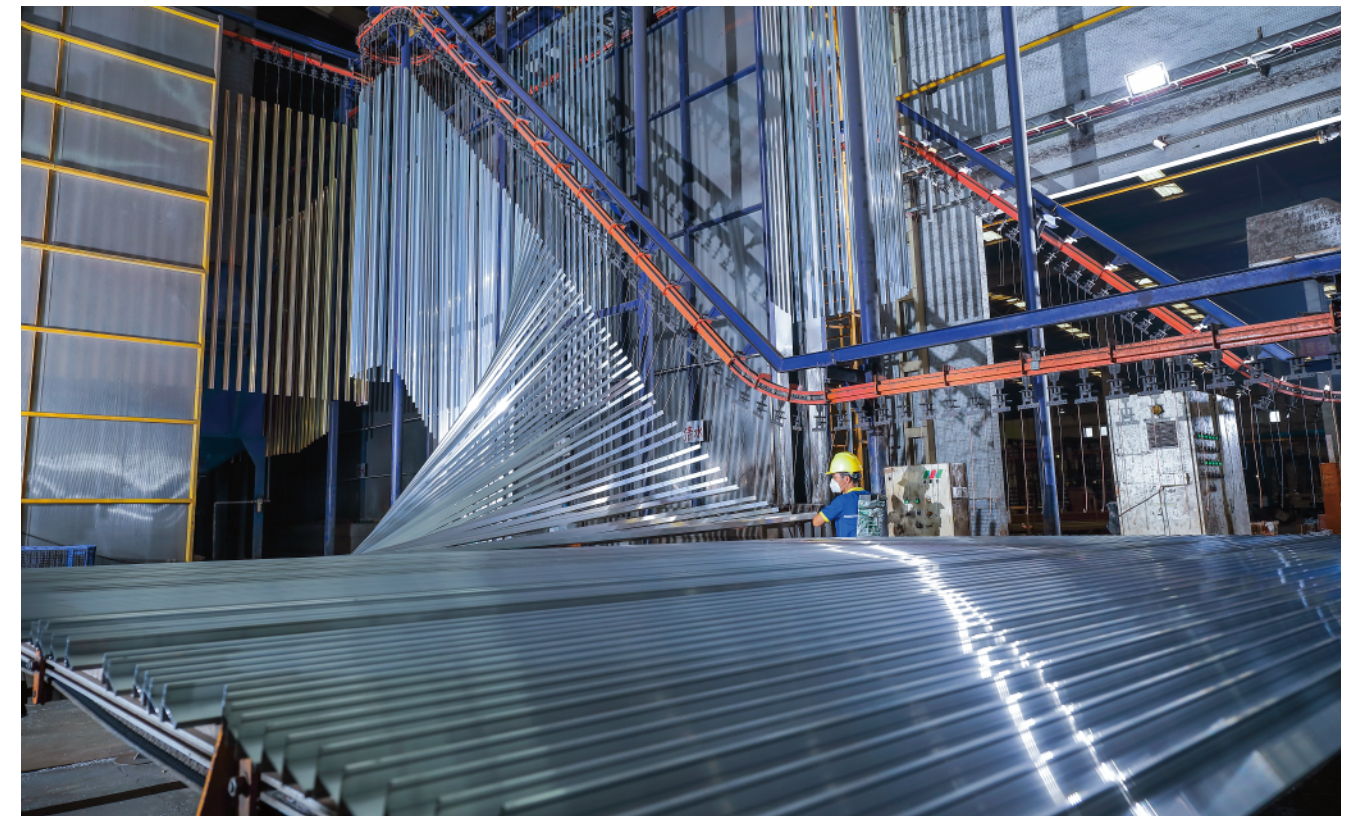
With the introduction of 6 horizontal powder -spraying production lines, 4 vertical powder- spraying production lines, 1 fluorocarbon spraying production line and 1 wood grain spraying production line from Australia, it can spray lengths of up to 12 meters.



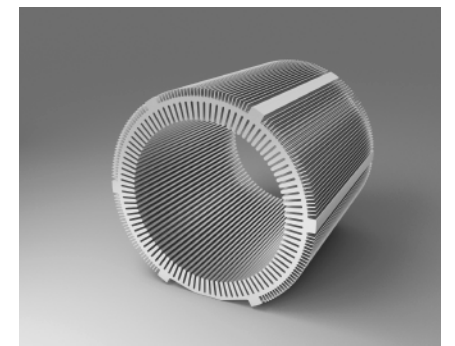
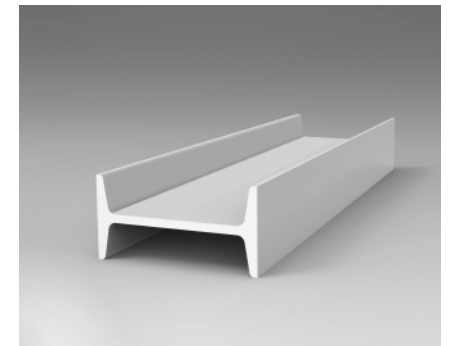
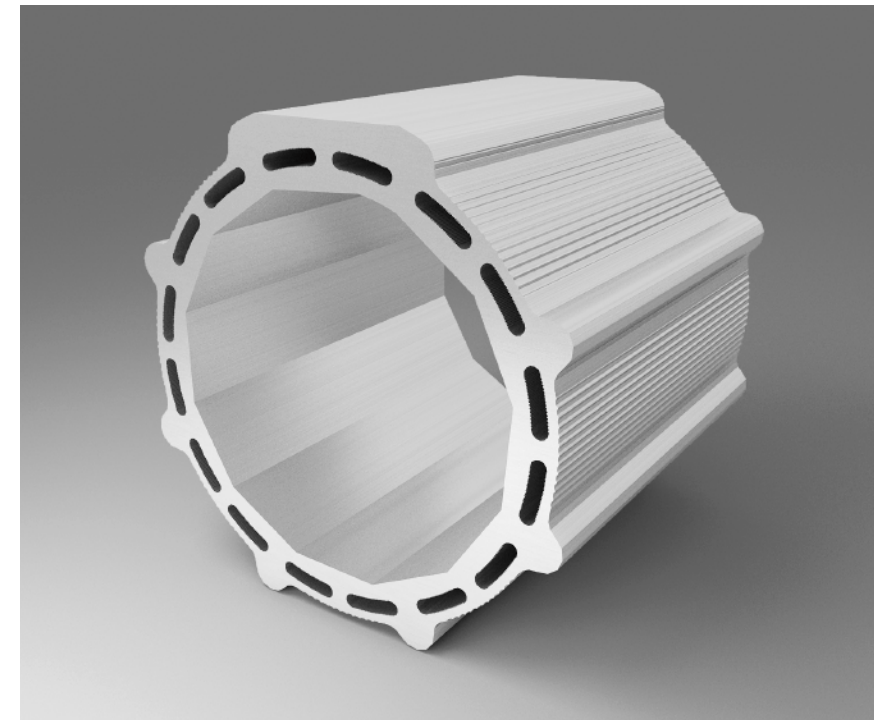
## 氧化车间 ANODIZING WORKSHOP

阳极氧化着色生产线2条，电泳涂漆生产线2条，最大长度能处理10米铝型材，年产量6万吨，车间设备具有在线检测产品膜厚、电脑自动对色、自动补充槽液等功能。

There are 2 anodizing production lines and 2 electrophoretic painting production lines, with a maximum length of 10 meters for processing aluminum profiles and an annual output of 60,000 tons. The workshop equipment has functions such as auto detection of product film thickness, automatic color matching by computer, and automatic replenishment of tank liquid.







## 交通运输 TRANSPORTATION

### 铝合金天桥、轨道交通、海陆空等

以绿色发展为导向，铝合金材料降低了整体成本、节省能耗，可以循环再利用，是实现交通运输工业现代化、轻量化的优选材料。

中亚铝业针对铝合金材料在轨道交通方面的应用做了大量研发，并开发出满足不同性能要求的高性能、高强度、耐热等一系列新型铝合金材料，具有优异的物理和力学性能、耐热耐蚀和阳极氧化外观等，助力扩大铝在交通运输中的作用。

### For aluminum bridges, rail transit, sea, land, and air transportation, etc

Guided by green development, aluminum alloy materials reduce overall costs and save energy. They can be recycled and are the preferred material for achieving modernization and lightweighting in the transportation industry.

Zhongya Aluminum has conducted extensive research and development on the application of aluminum alloy materials in rail transportation and has developed a series of new aluminum alloy materials that meet different performance requirements. These materials are high-performance, high-strength, and heat-resistant, with excellent physical and mechanical properties, heat and corrosion resistance, and anodized appearance. This contributes to expanding the role of aluminum in transportation.



## 机械结构 MECHANICAL STRUCTURE

### 机械平台、流水线输送带、封边机等

随着时代的发展，使用铝合金代替钢材以满足专业机械工程日益增长的需求，从而达到节能化、高效化效果的趋势日益明显，使用铝型材作为基础结构，其灵活的模块化设计，在原结构基础上做变更或延伸时，可以非常容易的实现，可进一步降低制造成本，提高生产效率。

### Mechanical platforms, assembly line conveyor belts, edge bonding machine, etc

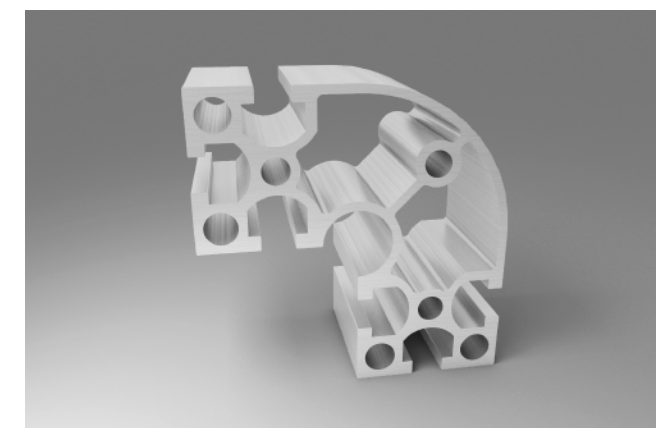
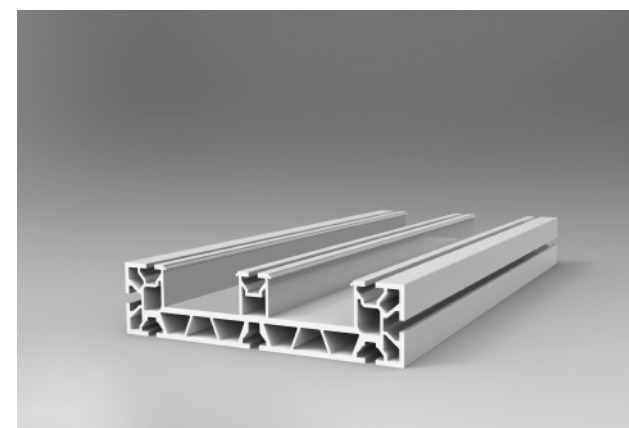
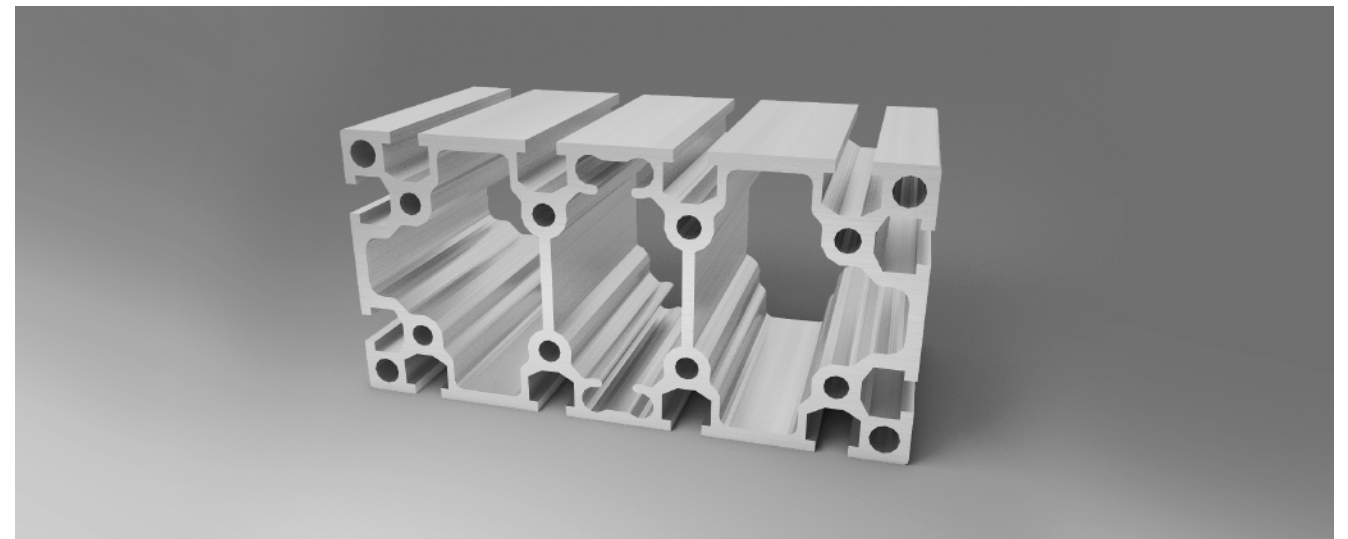
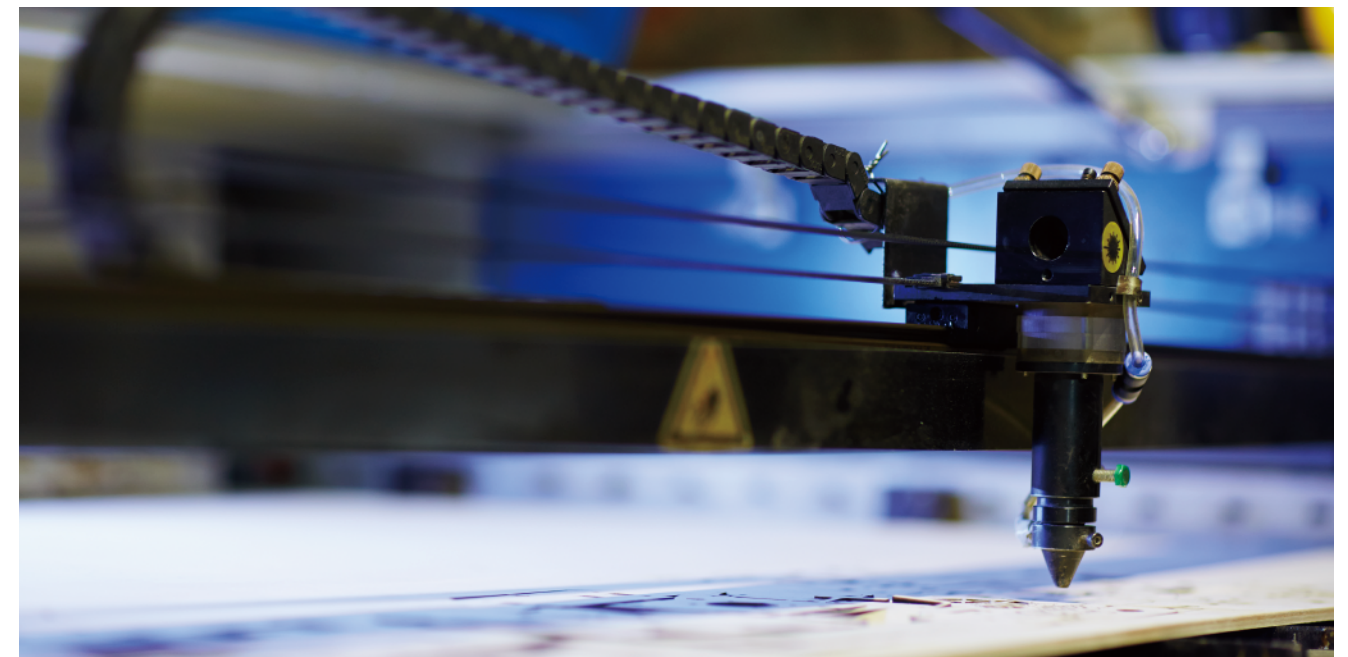
The trend of using aluminum alloy instead of steel to meet the growing demand of professional mechanical engineering and achieve energy-saving and high-efficiency effects is becoming increasingly apparent. Using aluminum profiles as the basic structure, its flexible modular design can be easily achieved when making changes or extensions to the original structure, which can further reduce manufacturing costs and improve production efficiency.



降低制造成本  
Reduced manufacturing costs



提高生产效率  
Improvement of production efficiency





## 新能源 NEW ENERGY

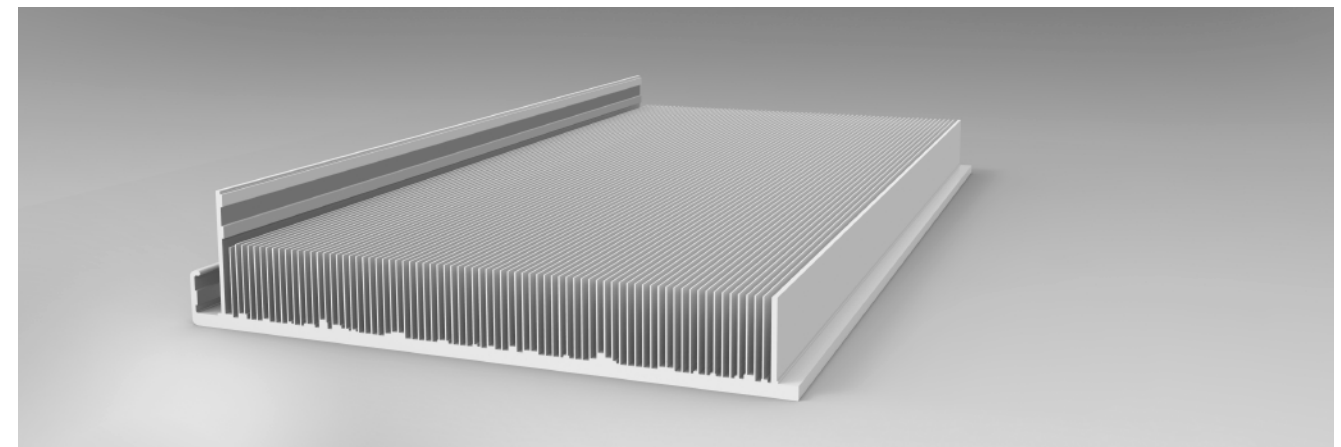
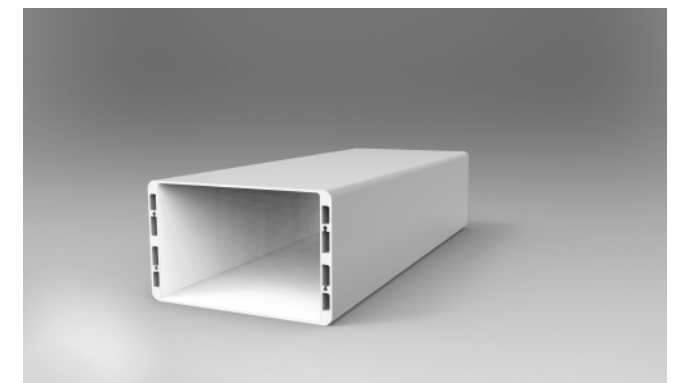
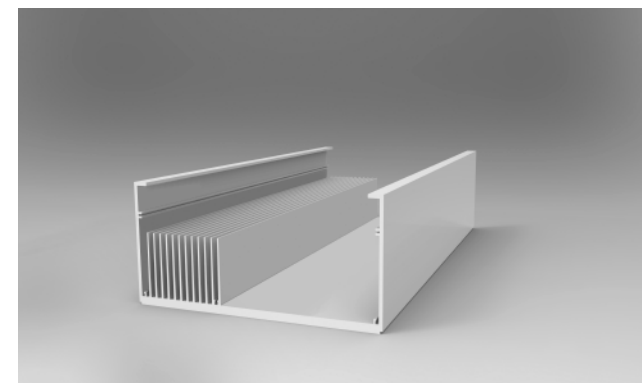


### 新能源发电、储能设备等

以光伏发电、水力发电、风力发电为代表的新能源产业正逐步成为实现我国能源结构优化与“双碳”目标的主力军。铝合金材料可用于制造太阳能电池板和太阳能热水器等太阳能设备的结构框架和外壳，风力发电机组的叶片、轮毂和外壳等部件，能电池的壳体和电极等部件等。中亚铝业致力于研发生产相关配套，解决各类新能源储能、发电等用铝型材需求。

### New energy generation, energy reserve equipment, etc

The new energy industry, represented by photovoltaic power generation, hydroelectric power generation and wind power generation, is gradually becoming the main force in achieving energy structure optimization and “Dual Carbon” goals in China. Aluminum alloy materials can be used to manufacture structural frames and casings for solar panels and solar water heaters, as well as components such as blades, wheels, and casings for wind turbines, and components such as casings and electrodes for energy batteries. Zhongya Aluminum is committed to researching and developing production related supporting facilities to meet the demand for aluminum profiles for various new energy storage, power generation, and other applications.





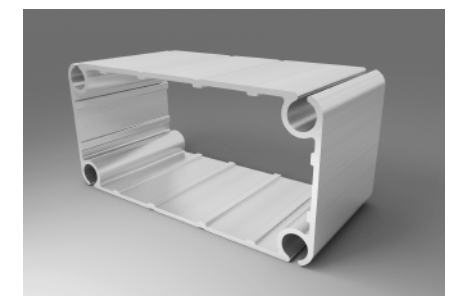
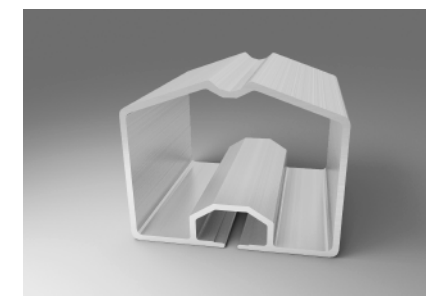
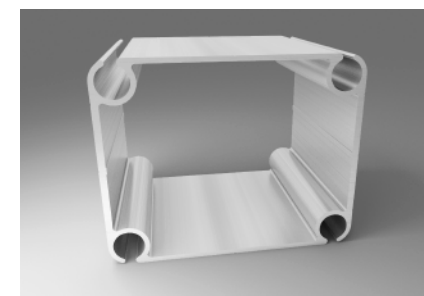
## 户外产品 OUTDOOR PRODUCTS

### 阳光房、户外家具、灯杆等

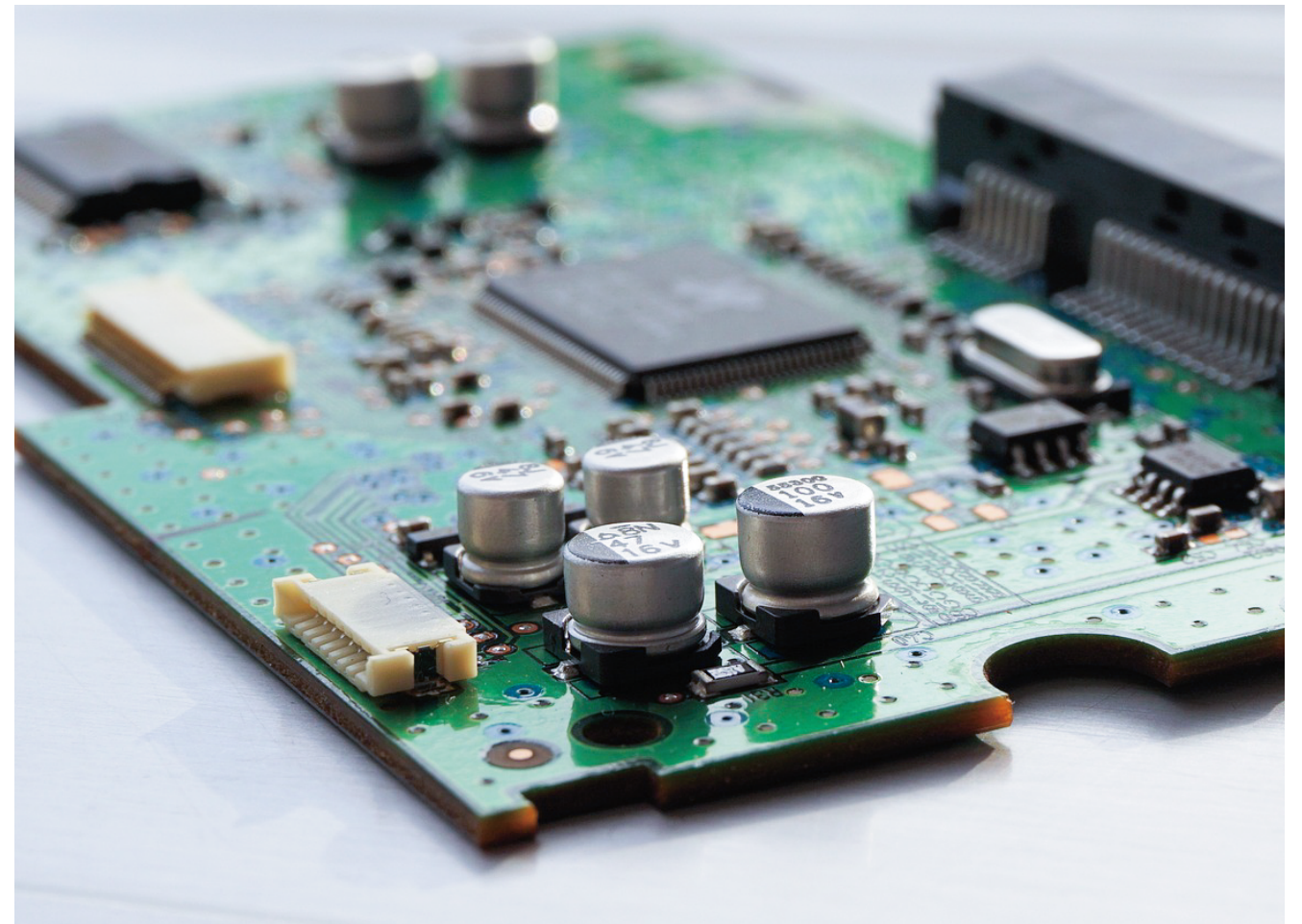
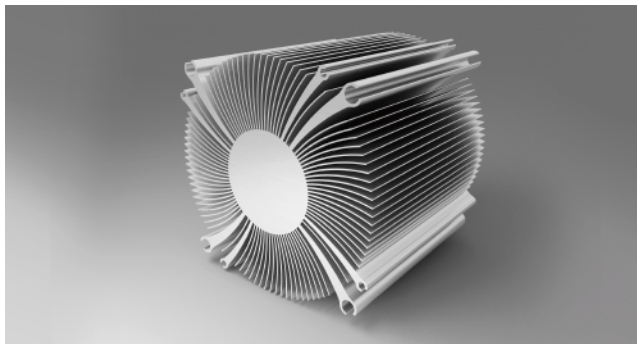
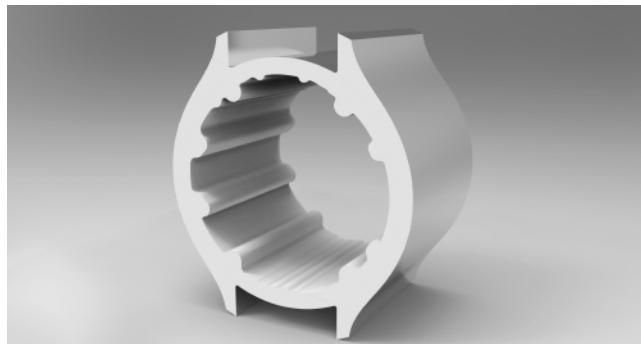
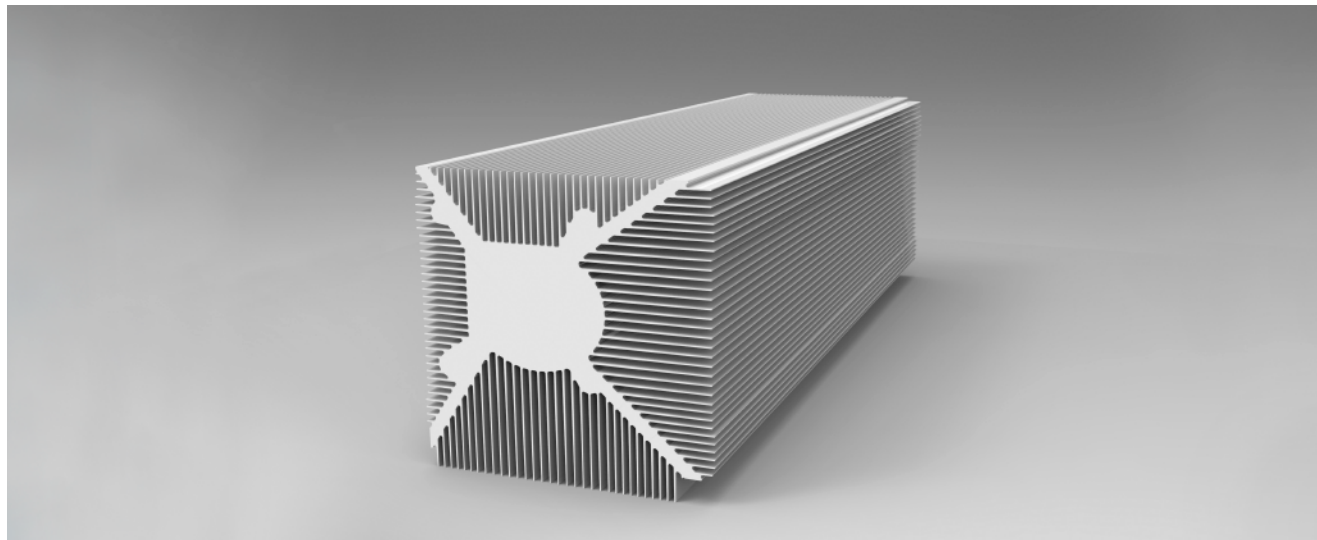
铝合金具有良好的耐腐蚀性能，能够抵御氧化、腐蚀和化学物质的侵蚀，是户外产品使用的最优选材料，中亚铝业专注铝合金户外产品生产、研发等，助力铝行业扩大铝应用的同时，其多样化、高品质表面处理技术可有效延长铝的使用寿命并增强美观度。

### Sunroom, outdoor furniture, lamp posts, etc

Aluminum alloy has excellent corrosion resistance, able to withstand oxidation, corrosion, and chemical erosion, making it the optimal material for outdoor products. Zhongya Aluminum focuses on the production and research and development of aluminum outdoor products. While aiding the aluminum industry in expanding the application of aluminum, its diversified and high-quality surface treatment technologies can effectively extend the lifespan of aluminum and enhance its aesthetic appeal.







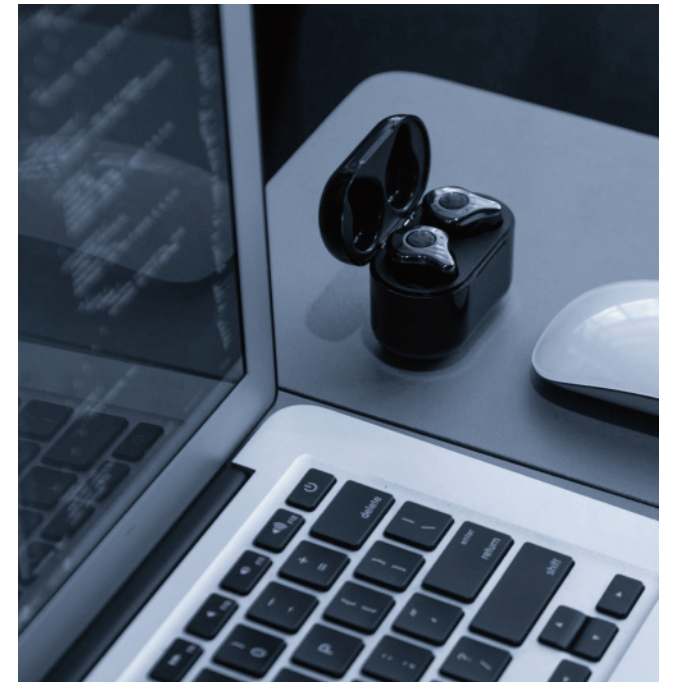
## 3C电子 3C ELECTRONICS

### 消费电子产品、散热器等

铝合金具备坚固耐用、方便着色、散热效果好、综合成本不断下降等优势，在3C电子行业中的应用领域越来越广泛，从合金设计、制造到产品开发等，中亚铝业不断满足3C产品技术迭代与更新的快节奏及市场的多样化需求，并提供多样化的表面处理方案。

### Consumer electronics, heat sinks, etc

Aluminum alloy has advantages such as durability, convenient coloring, good heat dissipation, and continuously decreasing overall costs. Its application in the 3C electronics industry is becoming increasingly widespread. From alloy design, manufacturing to product development, Zhongya Aluminum meets the fast pace of 3C product technological iteration and updates continuously, as well as the diverse needs of the market, and provides diversified surface treatment solutions.





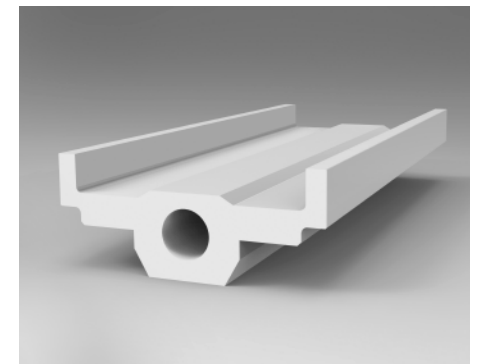
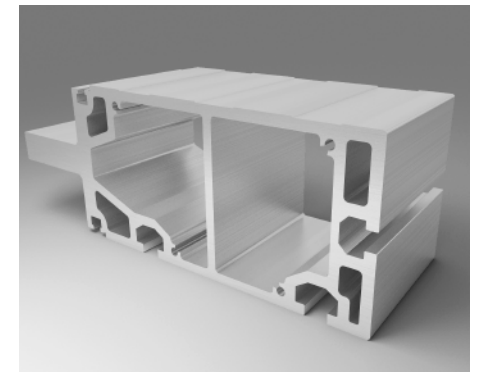
## 智能制造 INTELLIGENT MANUFACTURE

### 智能物流系统、智能仓储系统、模具管理仓等

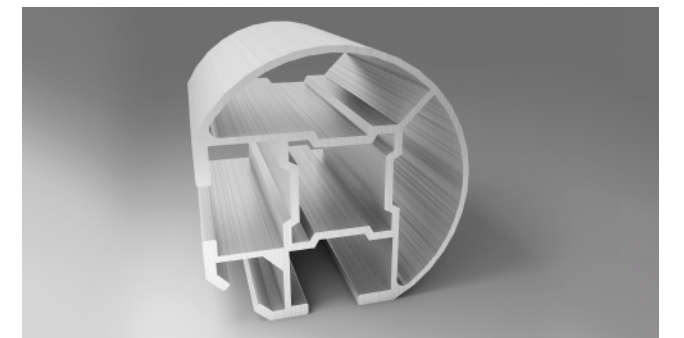
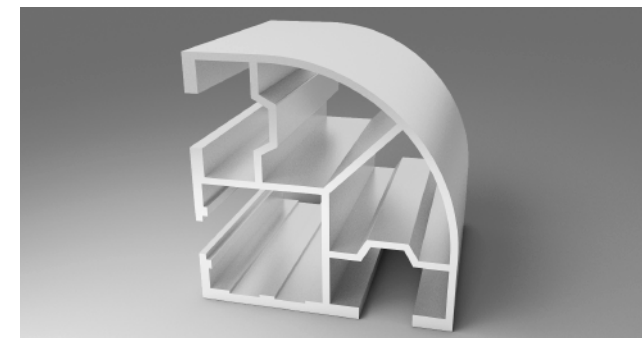
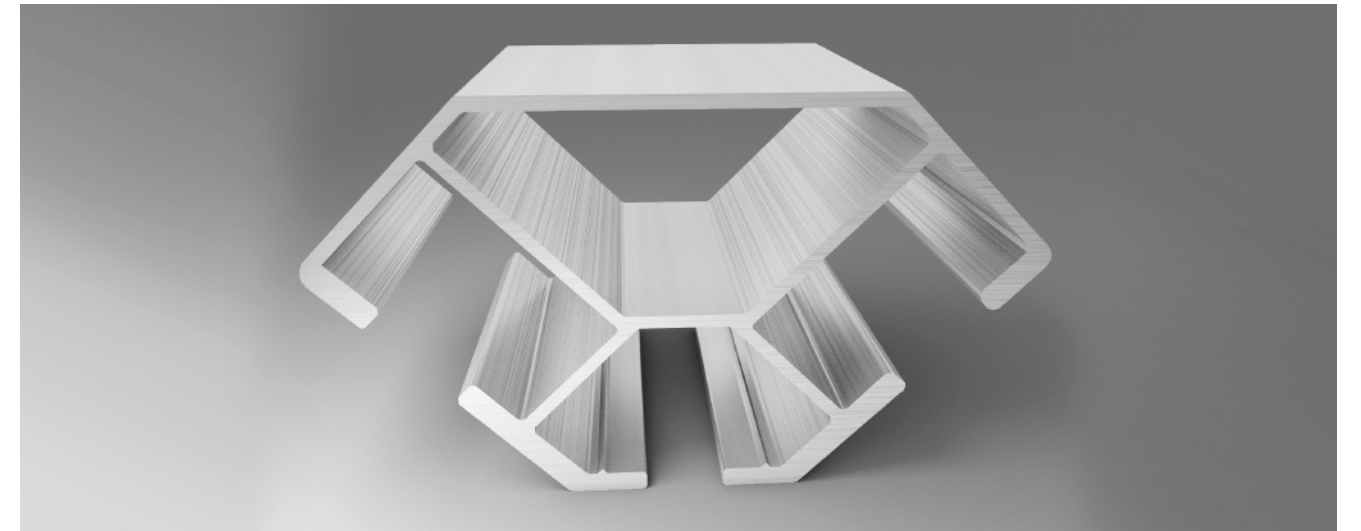
随着各行业快速发展，原有的储存、供应等方式已不能适应现有的生产节奏和管理要求，中亚铝业结合数字化工厂经验，在物流、仓储等环节，根据用户和行业需求提供轻量化、智能化、特色化的整体解决方案。

### Intelligent logistics system, intelligent warehousing system, die management warehouse, etc

With the rapid development of various industries, the original storage and supply methods can no longer adapt to the existing production rhythm and management requirements. Based on the experience of digital factories, Zhongya Aluminum provides lightweight, intelligent, and distinctive overall solutions in logistics, warehousing, and other links according to user and industry needs.







## 智能家居 SMART HOME

### 厨房、阳台、电视柜等

以“绿色、健康”环保理念为主导，越来越多的家居产品开始关注生态，践行落实“以铝代木”，中亚铝业深耕家居行业，利用自身工艺优势，提供型材和表面处理一体化解决方案，为家居行业探索更多元化的选择。

### Kitchen, balcony, TV cabinet, etc

Led by the concept of “Green, Healthy” environmental protection, more home products are paying attention to ecology and implement the practice of “replacing wood with aluminum”. Zhongya Aluminum cultivates the home industry deeply, utilizing its technological advantages to provide integrated solutions for profiles and surface treatment, and exploring more diversified choices for the home industry.

